

47/151

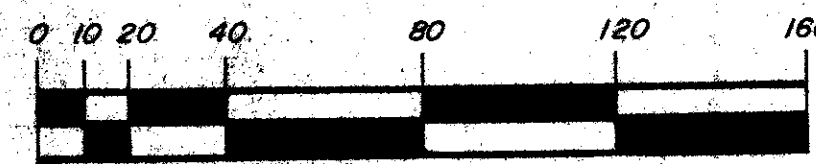
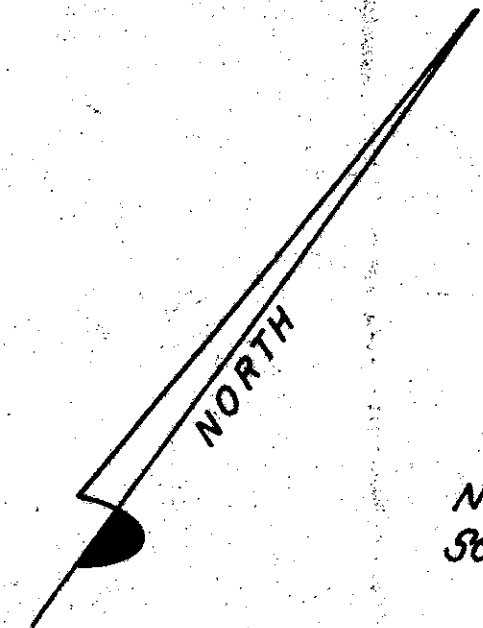
PLAT NO. THREE

LAKES OF DELRAY

BEING A PORTION OF THE NORTHWEST ONE - QUARTER OF SECTION 23, TOWNSHIP 46 SOUTH, RANGE 42 EAST PALM BEACH COUNTY, FLORIDA

NOVEMBER, 1983

SHEET 2 OF 2 SHEETS



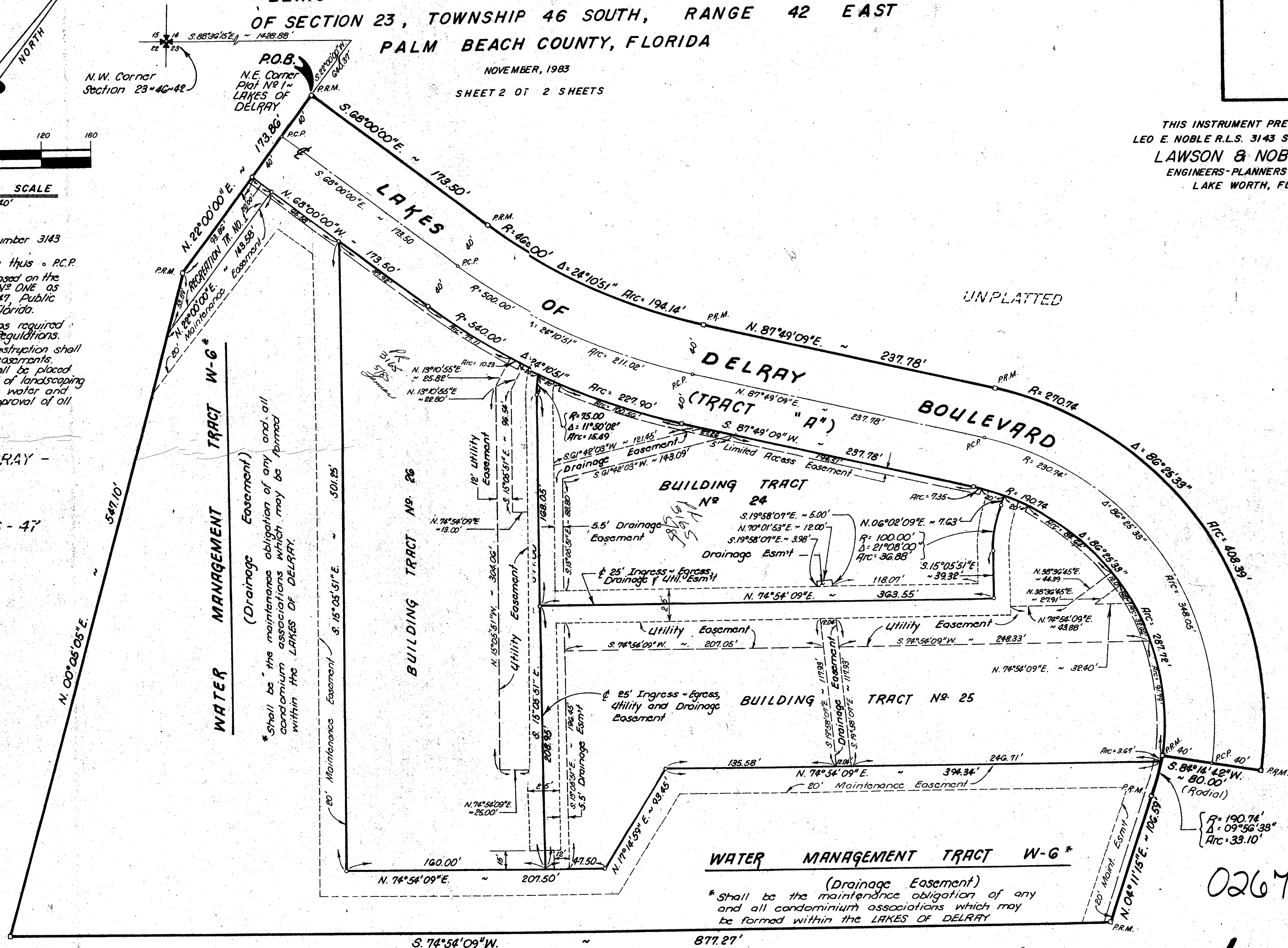
GRAPHIC SCALE
Scale: 1" = 40'

THIS INSTRUMENT PREPARED BY:
LEO E. NOBLE R.L.S. 3143 STATE OF FLORIDA
LAWSON & NOBLE, INC.
ENGINEERS-PLANNERS-SURVEYORS
LAKE WORTH, FLORIDA

SURVEYOR'S NOTES

- All P.R.M.'s bear the registration number 3143 shown thus \square P.R.M.
- Permanent Control Points shown thus \circ P.C.P.
- The bearings shown herein are based on the plat of LAKES OF DELRAY - PLAT NO ONE as recorded in Plat Book 42, Pg 46-47, Public Records of Palm Beach County, Florida.
- Buildings setback lines shall be as required by Palm Beach County Zoning Regulations.
- No buildings or any kind of construction shall be placed on utility or drainage easements. No structures, trees or shrubs shall be placed on drainage easements. Approval of landscaping on utility easements other than water and sewer shall be only with the approval of all utilities occupying same.

LAKES OF DELRAY -
PLAT NO ONE
P.B. 42, PP 46-47



WATER MANAGEMENT TRACT W-6*

(Drainage Easement)
* Shall be the maintenance obligation of any and all condominium associations which may be formed within the LAKES OF DELRAY

0267-004

LAKES OF DELRAY 47/151

UNPLATTED